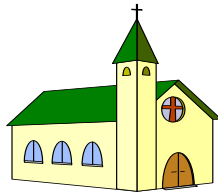




NZBS Demand Management Programme



“Blood transfusion is like marriage; it should not be entered upon lightly, unadvisedly or wantonly, or more often than is absolutely necessary”

R W Beal 1976



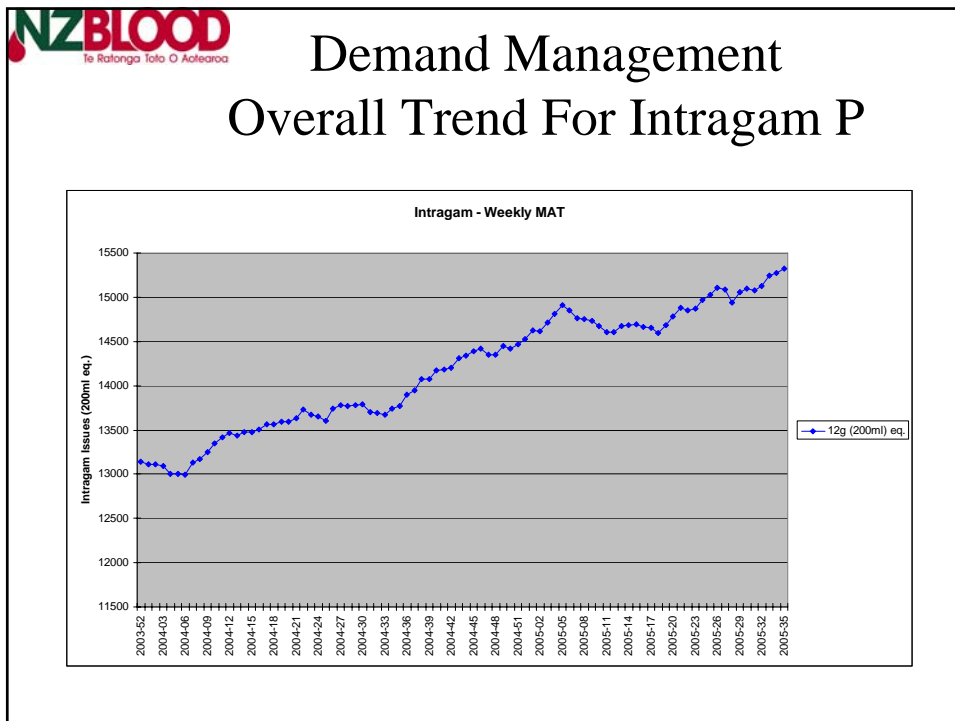
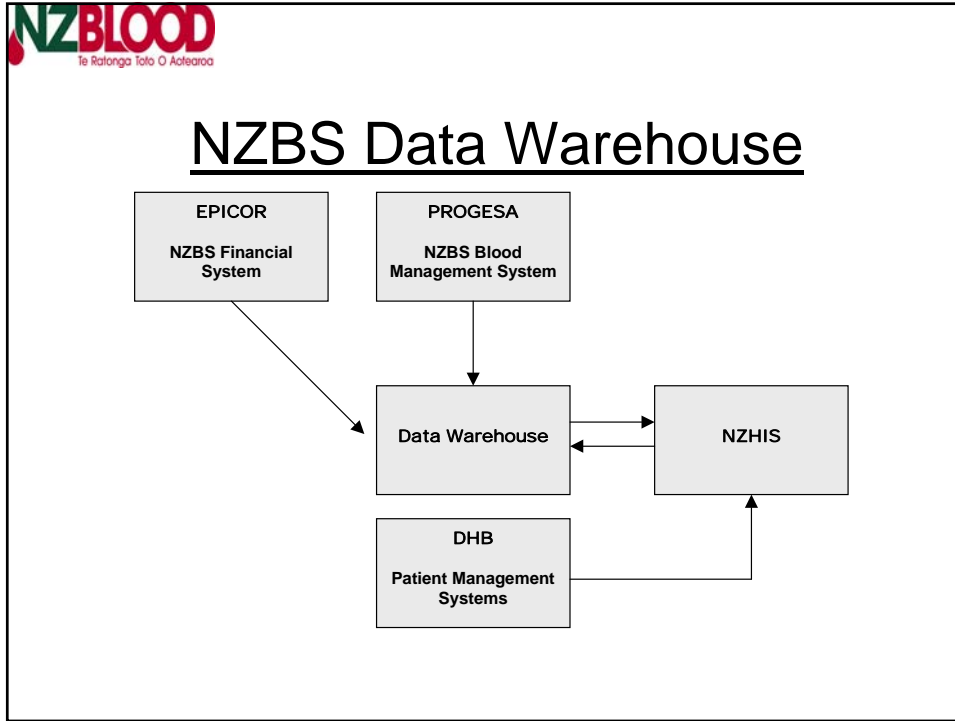
Demand Management Project

- Aims to provide information to DHB Clinicians and Managers to enable better understanding of blood utilisation in New Zealand
- Three main elements
 - **Standard datasets issued to DHBs on a monthly basis**
 - **Link with NZHIS**
 - **National audit programme**



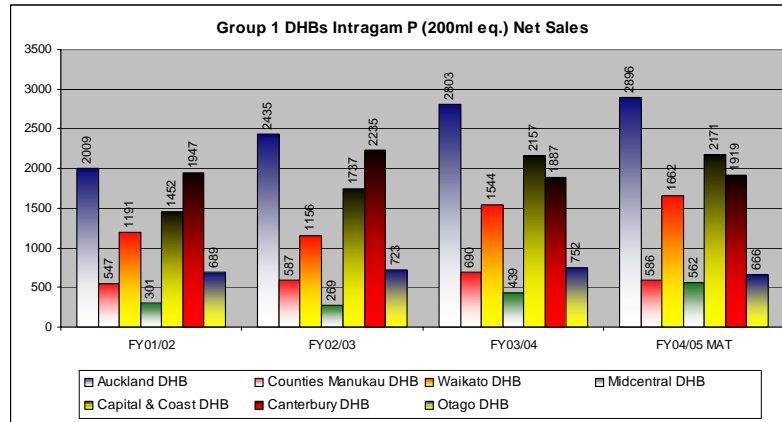
Progesa

- NZBS Blood management System
- Used at all NZBS sites and also DHB Blood Banks
 - > 98% of blood components transfused in NZ issued through the system
- Designed to manage stock, control process and ensure traceability

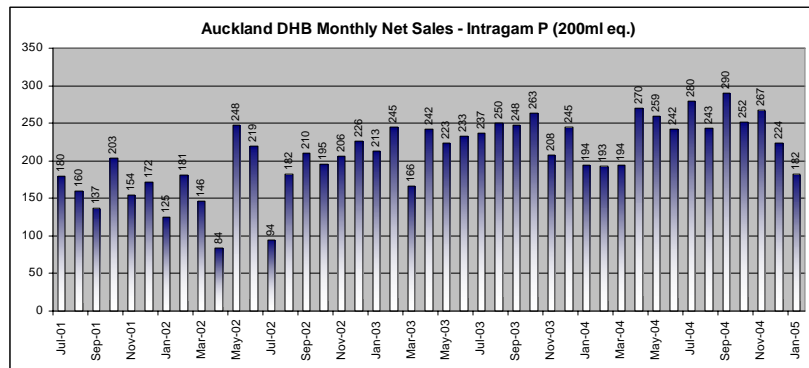


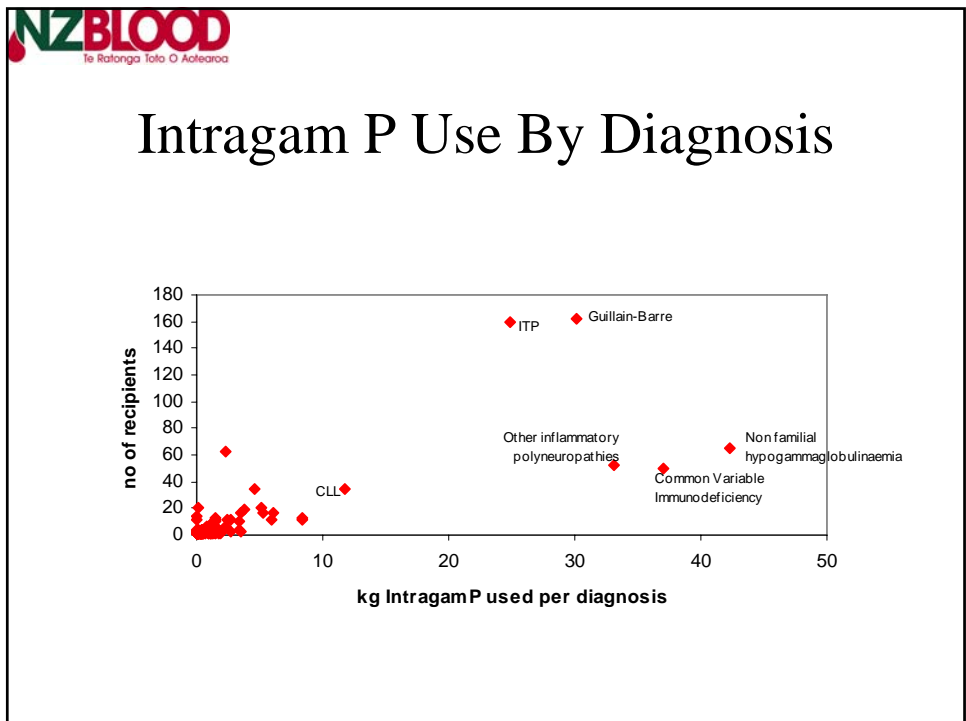
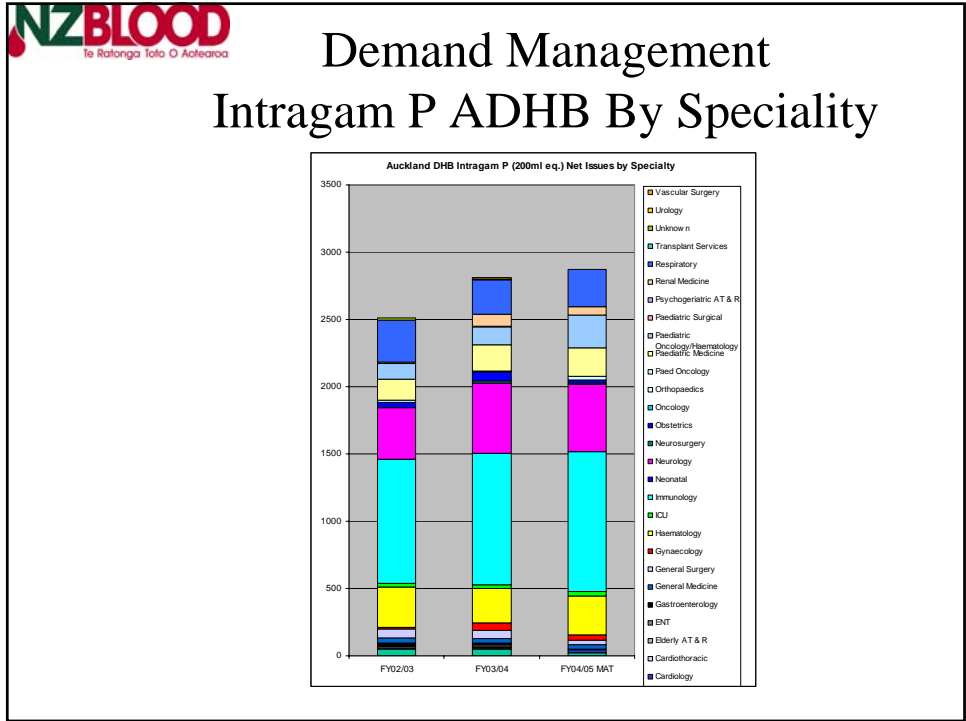


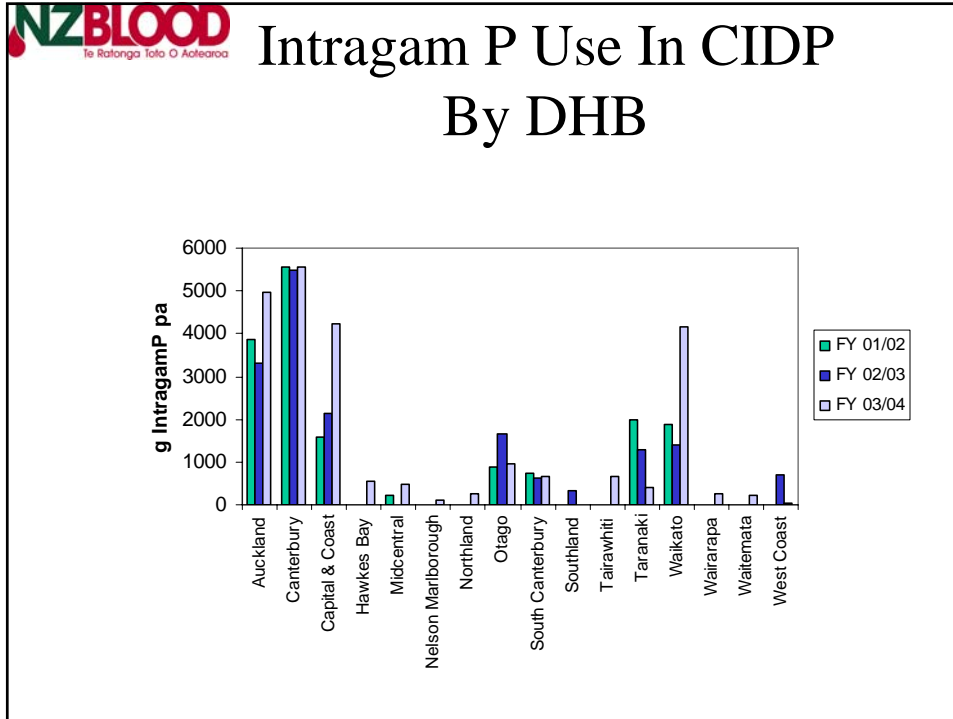
Demand Management Intragram P Issues Tertiary DHBs



Demand Management ADHB Monthly Issues Of Intragram P







Enter Category	Intragam P	Domicile DHB				
DHB	Region	2003/04 Population (000s)	2003/04 Sales	Units per 1000 Population	2003/04 Usage	Units per 1000 Population
Auckland DHB	North	370	2803	7.6	1245.5	3.4
Counties Manukau DHB	North	376	690	1.8	N/A	N/A
Northland DHB	North	144	396	2.8	374.75	2.6
Waitemata DHB	North	432	342	0.8	1092.25	2.5
Ministry of Health - Northern	North		176			
Northern Region Total		1322	4407	3.3	2712.5	
Waikato DHB	Waikato	326	1544	4.7	1323.5	4.1
Bay of Plenty DHB	Waikato	177	848	4.8	833.5	4.7
Lakes DHB	Waikato	101	329	3.3	419.5	4.2
Taranaki DHB	Waikato	115	192	1.7	292.25	2.5
Tairāwhiti DHB	Waikato	47	130	2.8	206.5	4.4
Ministry of Health - Hamilton	Waikato		32			
Waikato Region Total		766	3075	4	3075.25	
Midcentral DHB	Central	161	439	2.7	471.75	2.9
Capital and Coast DHB	Central	248	2157	8.7	1474.25	5.9
Hawkes Bay DHB	Central	146	407	2.8	435	3
Hutt DHB	Central	135	236	1.7	560.25	4.2
Whanganui DHB	Central	66	71	1.1	43.5	0.7
Wairarapa DHB	Central	38	59	1.6	170.25	4.5
Ministry of Health - Central	Central		2			
Central Region Total		794	3371	4.2	3155	
Canterbury DHB	South	434	1687	4.3	1680.25	3.9
Otago DHB	South	177	752	4.2	856.25	4.8
Nelson Marlborough DHB	South	122	138	1.1	78	0.6
Southland DHB	South	106	804	7.6	687.5	6.5
West Coast DHB	South	33	37	1.1	100.5	3
South Canterbury DHB	South	54	139	2.6	162.75	3
Ministry of Health - Southern	South		7			
Southern Region Total		926	3764	4.1	3565.25	
National Total		3908	14617	3.8	12508	
Unspecified DHB					1383	
Counties Manukau DHB					736.5	

= Progesa Go-Live during FY04

NZBLOOD
Te Ratonga toto o Aotearoa

DHB Blood Banks Red Cell Expiry Rates

RBC Usage - Average by Group

Group	Sum of Net Issues		Price \$182.12	Destroyed by DHB	Price \$182.12	% Destroyed	Returned to NZBS	Price \$182.12	% Returned	Issued to Patients	Price \$182.12	% Transfused	Avg % Transfused
	Issues from NZBS	Avg Issues per group											
1	Counties Manukau DHB	6954	1,102,564	176	32,053.12	2.9%	55	10,017	0.9%	5,835	1,062,670	96.4%	
2	Bay of Plenty DHB	9520	1,005,302	332	60,463.84	6.0%	74	13,477	1.3%	5,102	928,176	92.4%	
	Nelson Marlborough DHB	4049	736,765	1,056	192,318.72	26.1%	41	7,467	1.0%	2,935	534,522	72.6%	
	Northland DHB	4027	733,397	174	31,688.88	4.3%	55	10,017	1.4%	3,734	680,036	92.7%	
	Southland DHB	2865	521,774	167	30,414.04	5.8%	60	10,927	2.1%	2,624	477,883	91.6%	
	Waitemata DHB	8500	4990	1,548,020	195	35,513.40	2.3%	74	13,477	0.9%	8,149	1,484,096	95.9%
3	Hawkes Bay DHB	3257	593,165	102	18,576.24	3.1%	8	1,457	0.2%	3,119	568,032	95.8%	
	Hutt Valley DHB	2790	508,115	149	27,135.88	5.3%	91	16,573	3.3%	2,560	466,227	91.8%	
	Lakes DHB	2462	448,379	366	66,655.92	14.9%	108	19,669	4.4%	2,001	364,422	81.3%	
	Taranaki DHB	2661	2793	484,621	93	16,937.16	3.5%	52	9,470	2.0%	2,496	454,572	93.8%
4	South Canterbury DHB	1796	326,805	162	29,503.44	9.0%	22	4,007	1.2%	1,611	293,395	89.7%	
	Tairāwhiti DHB	2315	421,608	103	18,758.36	4.4%	737	134,222	31.8%	1,494	272,087	64.5%	
	Wairarapa DHB	1546	281,558	105	19,122.60	6.8%	411	74,851	26.6%	1,019	185,580	65.9%	
	Wairarapa DHB	1425	259,521	96	17,483.52	6.7%	18	3,278	1.3%	1,296	236,028	90.9%	
	West Coast DHB	1858	1788	336,379	21	3,824.52	1.1%	392	180,683	53.4%	777	141,507	41.8%
	Grand Total	52,100	\$9,486,452	3,348	\$609,738	6.4%	2,874	\$523,413	5.5%	45,605	\$8,305,583	87.5%	

