



NEW ZEALAND HEALTH
INFORMATION SERVICE
TE PĀRONGO HAUORA



MINISTRY OF
HEALTH
MANATU HAUORA

NZHIS UPDATE PRESENTATION

Presentation to: HINZ 2006 Conference

Presented By: Jason Whakaari (GM NZHIS)

<9th August 2006>



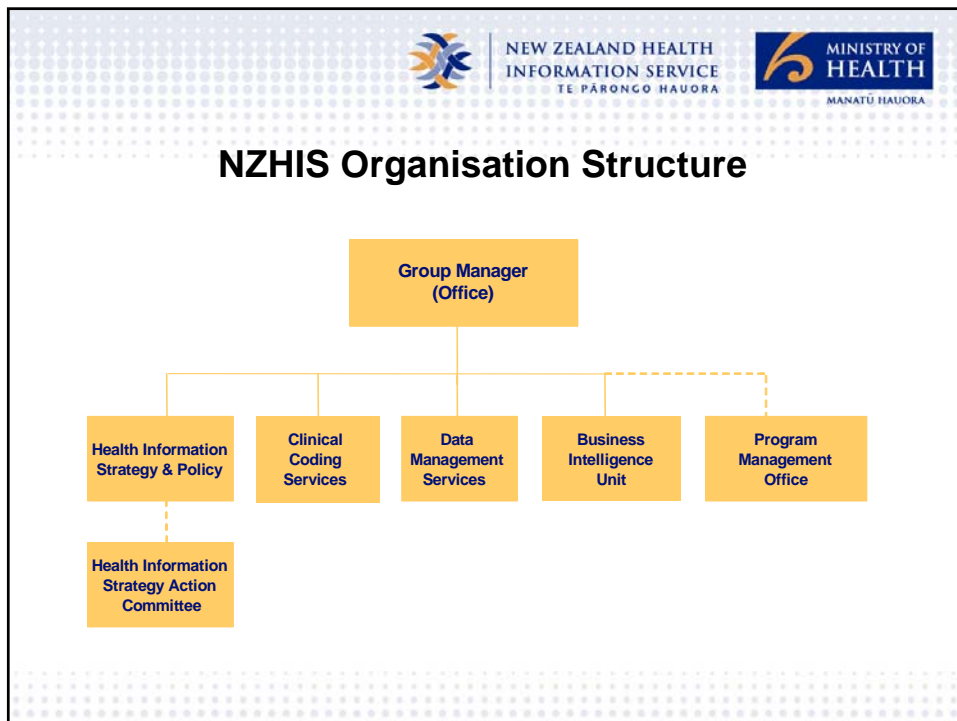
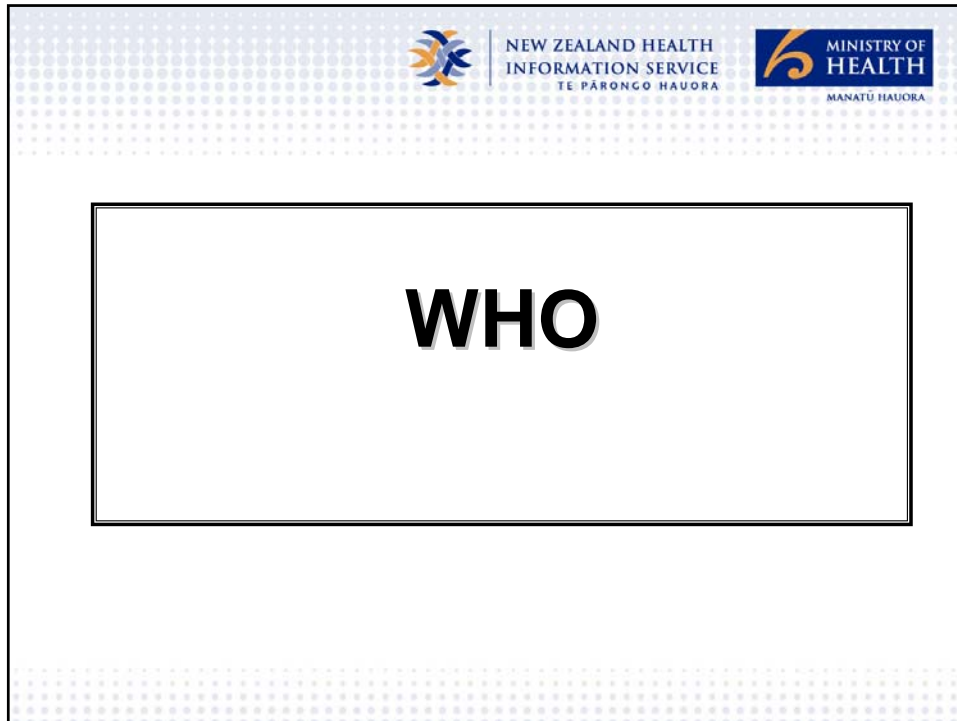
NEW ZEALAND HEALTH
INFORMATION SERVICE
TE PĀRONGO HAUORA

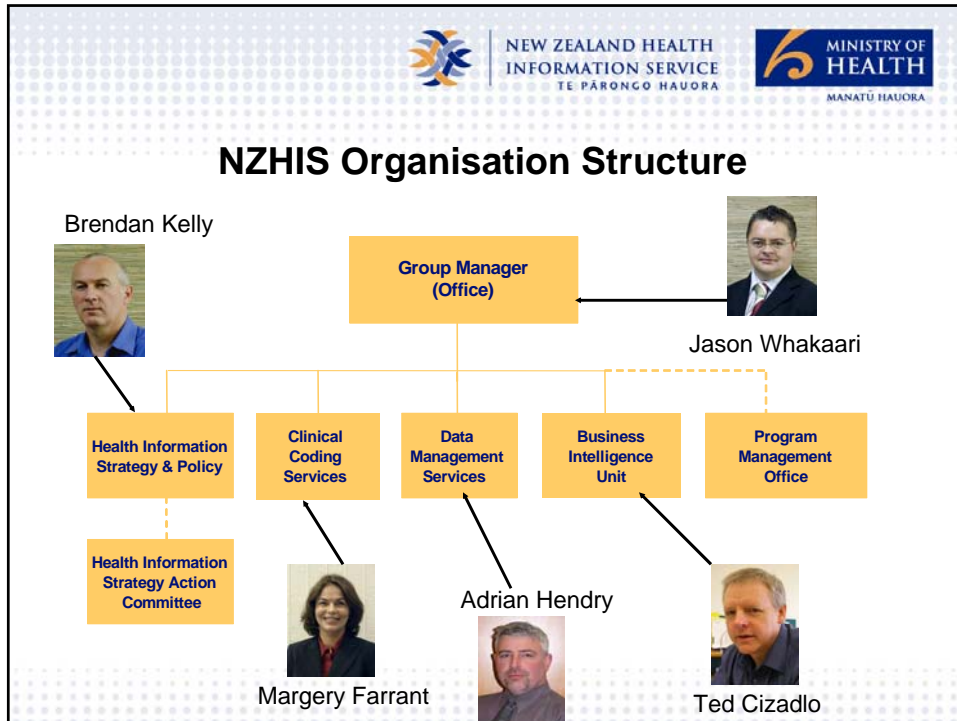


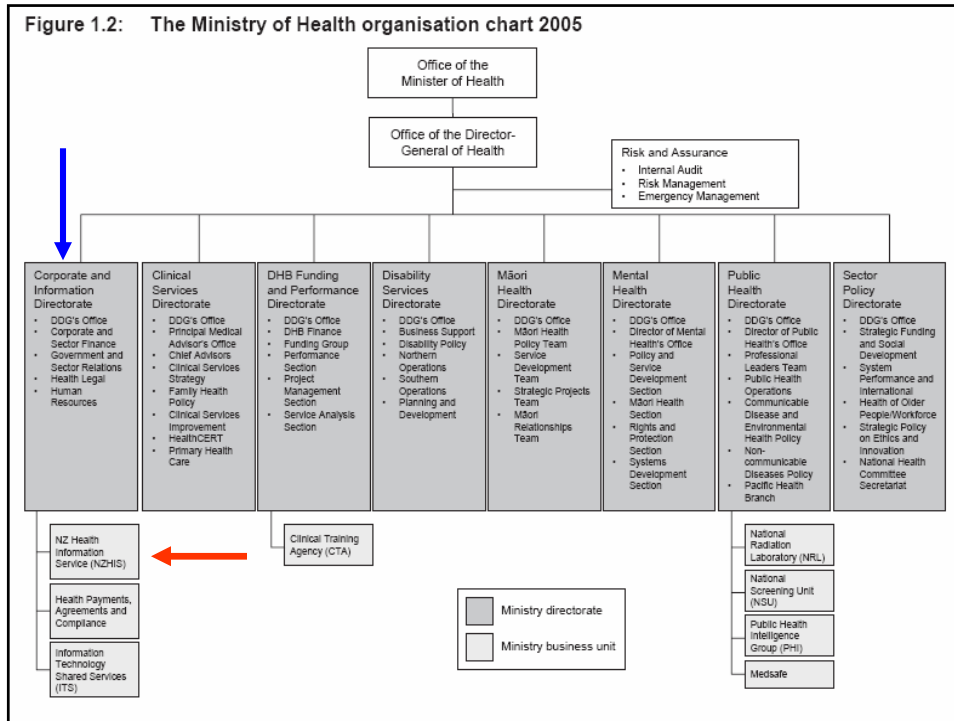
MINISTRY OF
HEALTH
MANATU HAUORA

NZHIS Update - Discussion Topics

- 1. Who/Where/Why/What/&When**
- 2. NZHIS 2006/07 Publications**
- 3. NZHIS Involvement in Major Projects**
- 4. NZHIS Key Challenges on the Horizon**










NEW ZEALAND HEALTH
INFORMATION SERVICE
TE PĀRONGO HAUORA




MINISTRY OF HEALTH
MANATU HAUORA

Other “WHERE to find us details”

- **Physical Address**
 - 133 Molesworth Street, Wellington
- **Postal Address**
 - PO Box 5013, Wellington
- **NHI Operational Queries**
 - Ph: (0800) 505 125
- **Data & Analysis Queries**
 - Ph: (04) 816 1800
- **NZHS Publications**
 - Ph: (04) 816 2870
- **Clinical Coding Workshops**
 - Ph: (04) 816 3337



NEW ZEALAND HEALTH
INFORMATION SERVICE
TE PĀRONGO HAUORA




MINISTRY OF
HEALTH
MANATU HAUORA

WHY



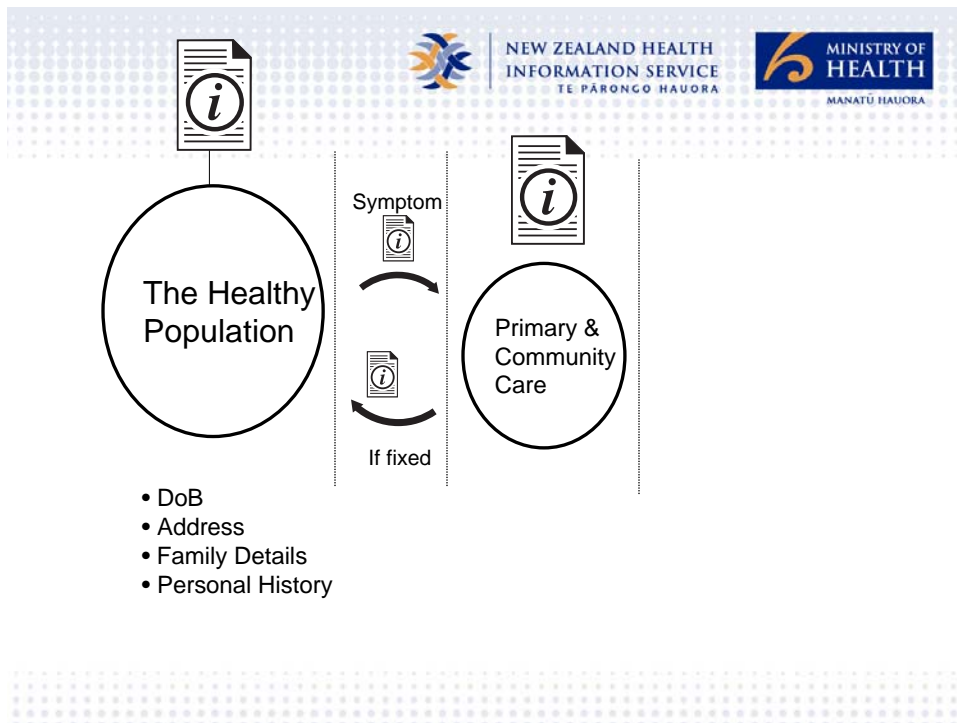
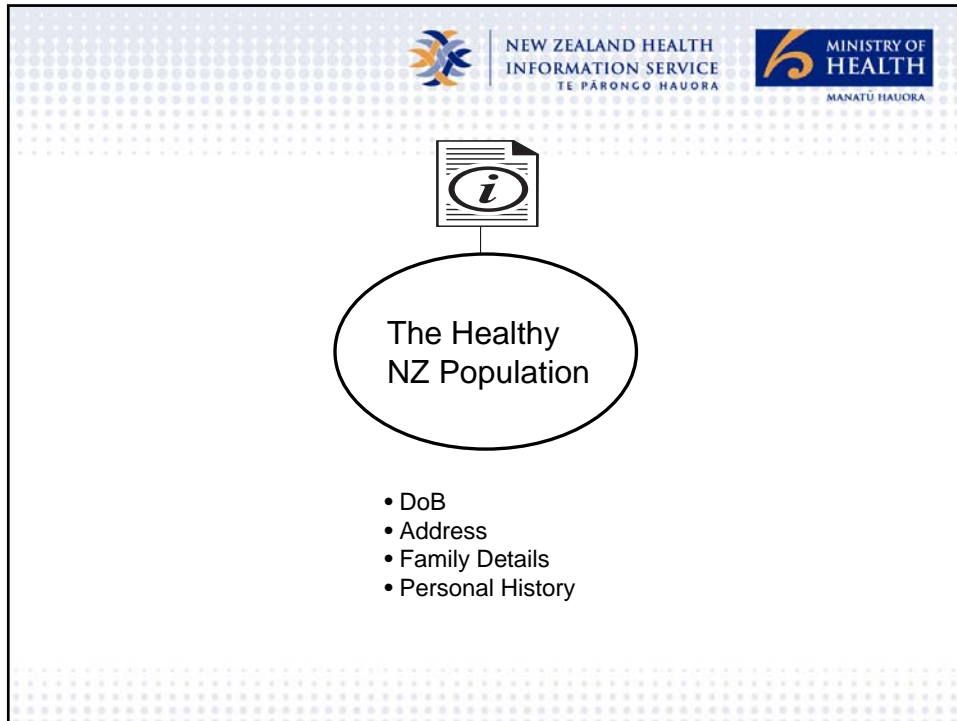
NEW ZEALAND HEALTH
INFORMATION SERVICE
TE PĀRONGO HAUORA

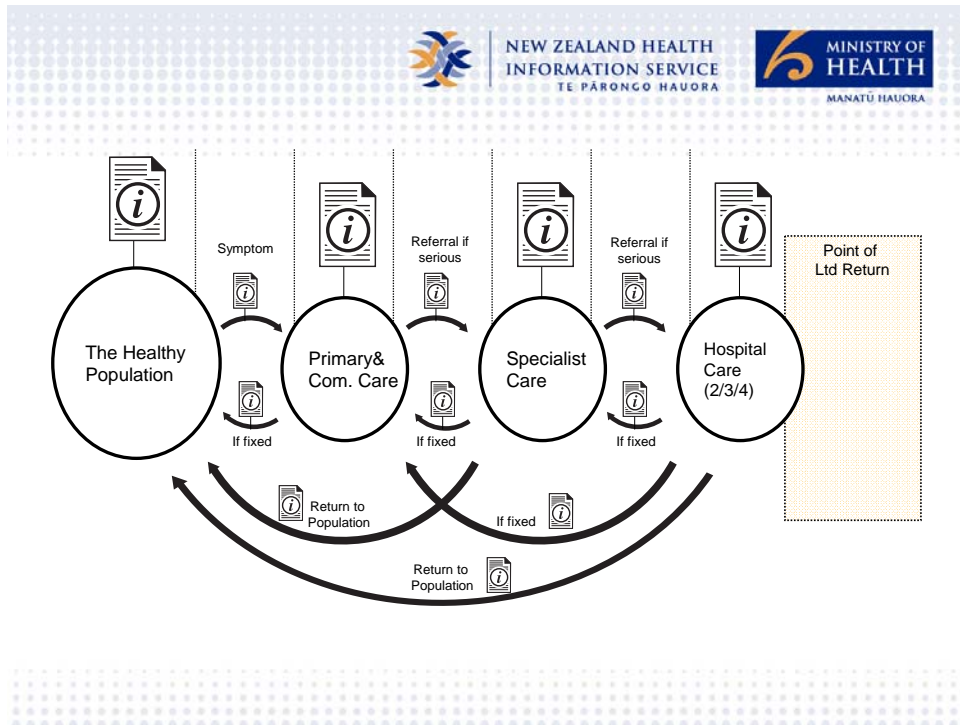
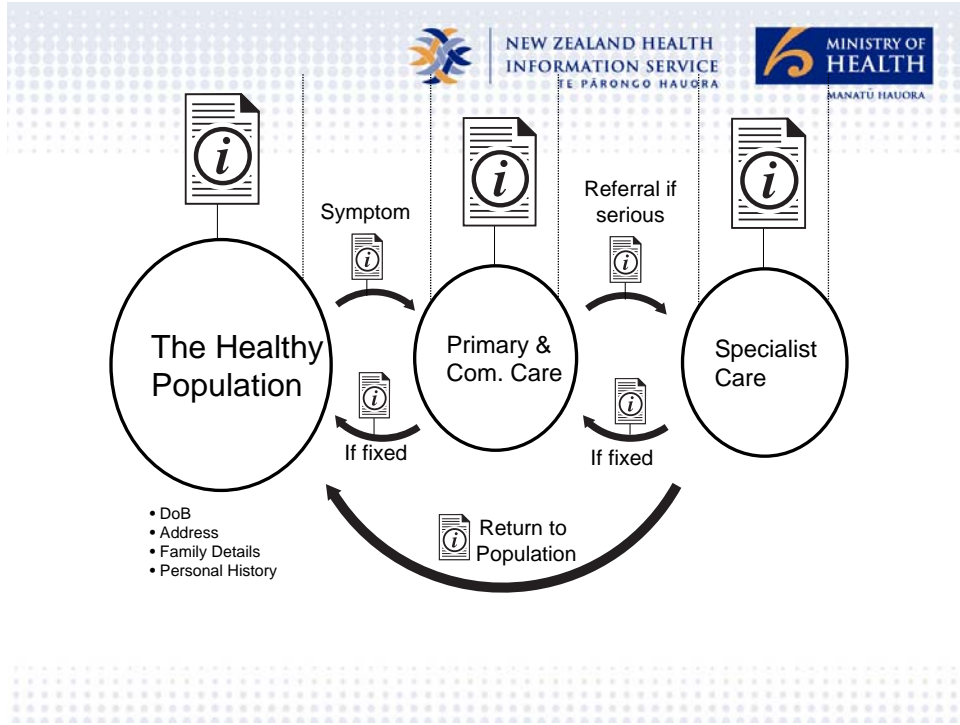


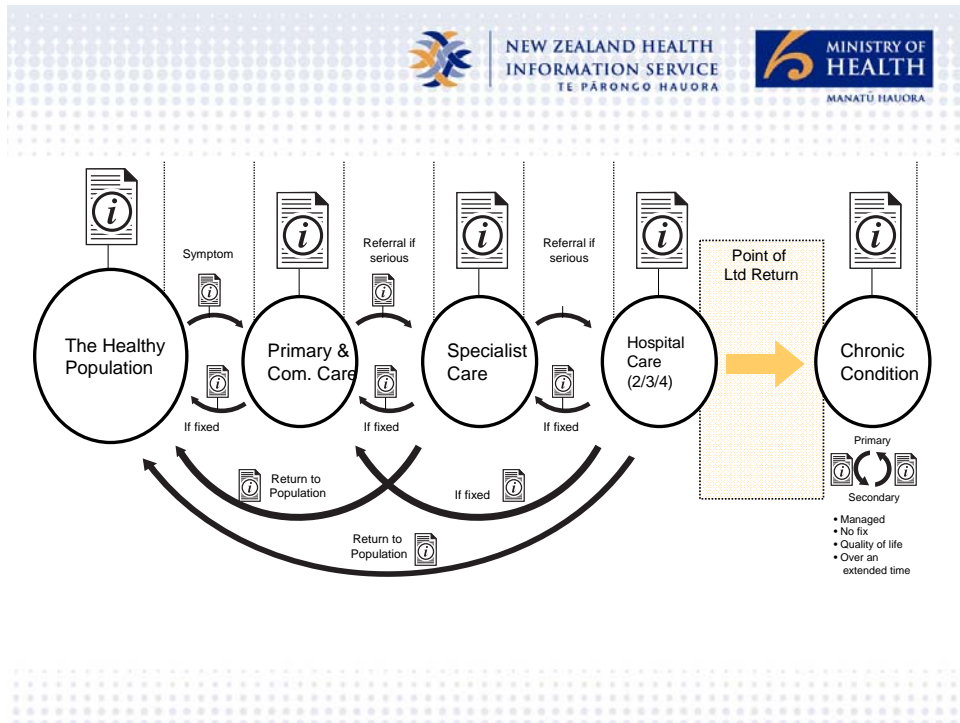
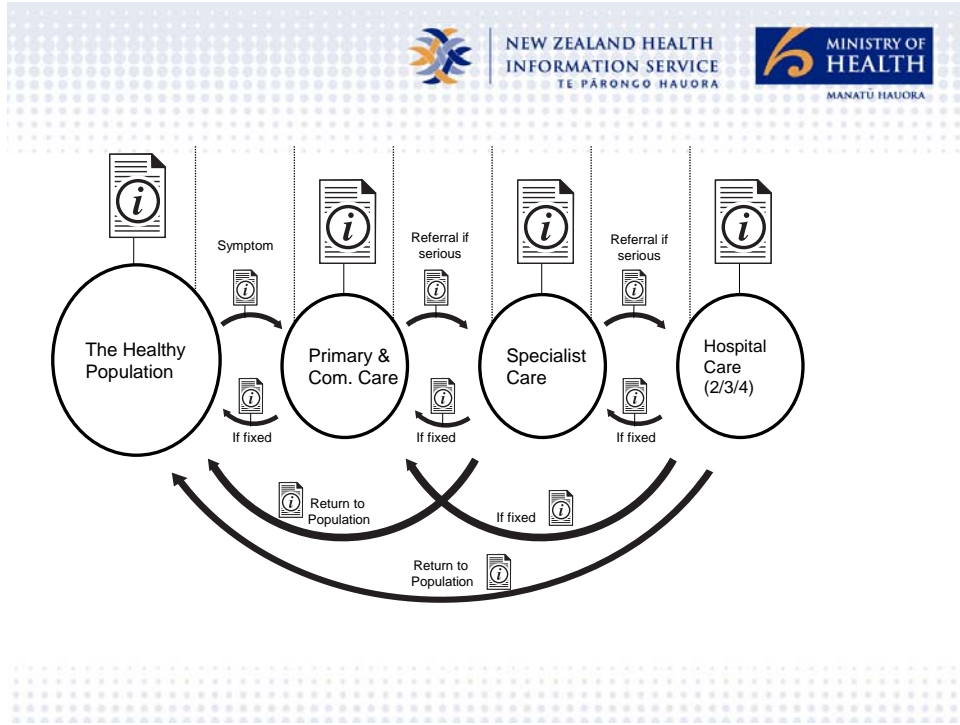
MINISTRY OF
HEALTH
MANATU HAUORA

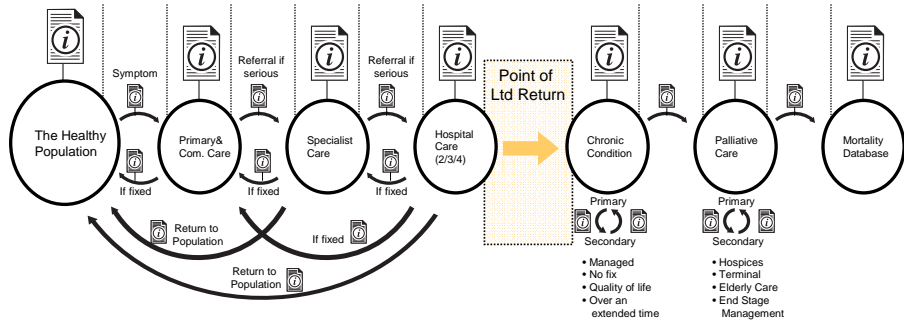
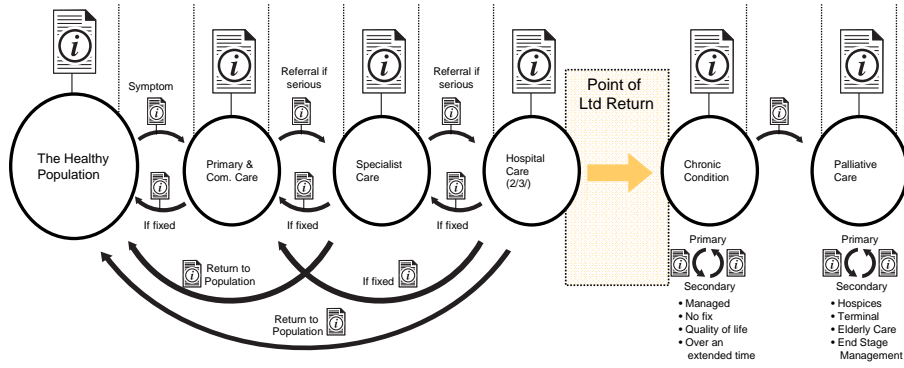
A Day in the life...

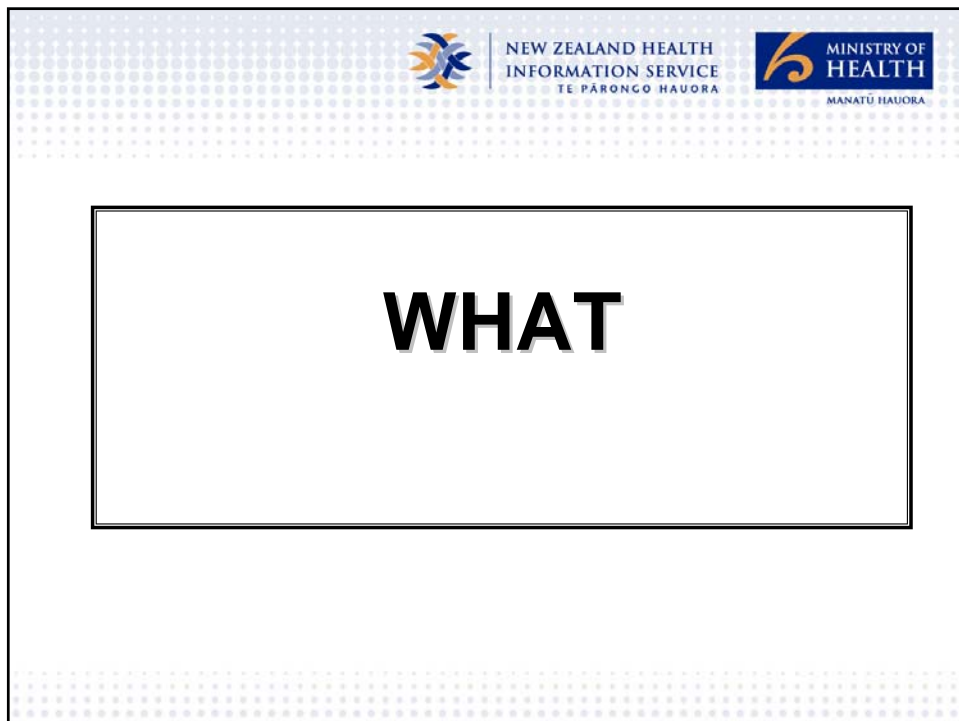
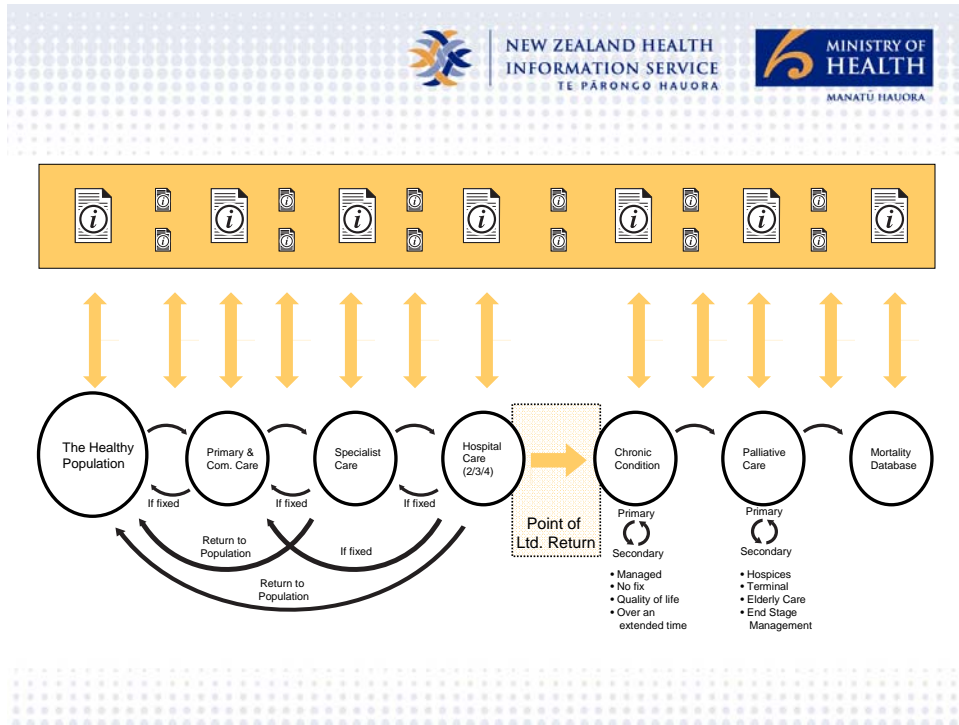
157	babies are born
73	people die
<hr/>	
105,000	prescriptions are filled
50,000	people take a cholesterol-lowering drug
50,000	people take one of the new antidepressants, eg: Prozac
40,000	laboratory tests are analysed
<hr/>	
1,167	people are admitted to our hospitals (7,127)
4,000	outpatients visit hospitals for care
432	people have elective surgical operations
1,960	people are seen in Emergency Departments
27	people are admitted to hospital with asthma
<hr/>	
50,000	people visit their GP
21	people have heart attacks
19	people are diagnosed with diabetes
637	children are immunised
2,124	children and adolescents have a dental check up
3,000	new claims received by ACC









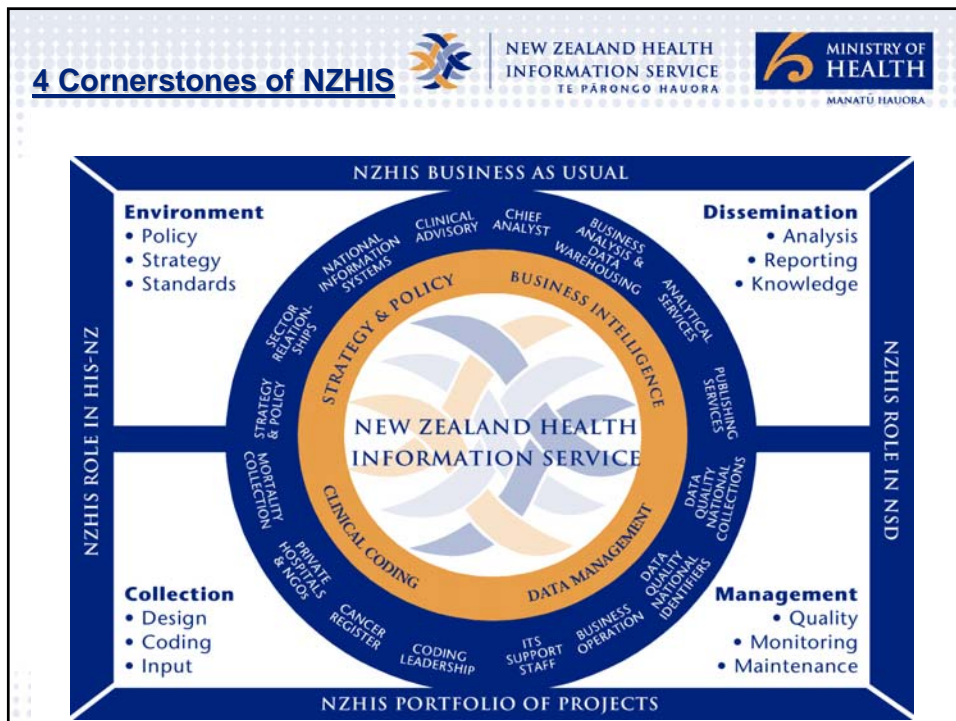


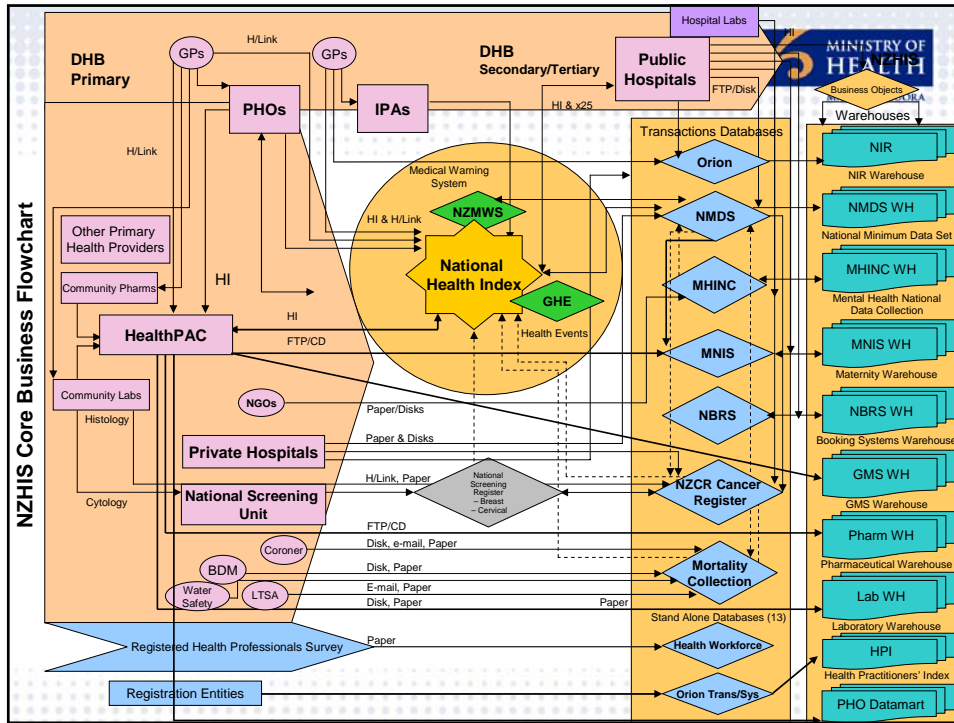
 NEW ZEALAND HEALTH INFORMATION SERVICE
TE PĀRONGO HAUORA


 MINISTRY OF HEALTH
MANATU HAUORA

Vision *Leading Health Information in New Zealand*

Mission *Supporting improved health and disability outcomes through ensuring effective governance and delivering value through robust management of national health and disability information & systems.*








NEW ZEALAND HEALTH
INFORMATION SERVICE
TE PĀRONGO HAUORA




MINISTRY OF
HEALTH
MANATU HAUORA

Other “WHAT we do resources”

- NZHIS Business Plan (2006/07)
- <Website> www.nzhis.govt.nz
- <E-mail> inquiries@nzhis.govt.nz
- NZHIS HINZ Conference Info Stand
- NZHIS Information Brochures
 - Overview of NZHIS Services
 - National Health Info Collection Systems
 - June 2006 NZHIS Publications
 - National Non-Admitted Patient Collection
 - Health Pratictioner Index




NEW ZEALAND HEALTH
INFORMATION SERVICE
TE PĀRONGO HAUORA




MINISTRY OF
HEALTH
MANATU HAUORA

WHEN



NEW ZEALAND HEALTH
INFORMATION SERVICE
TE PĀRONGO HAUORA



MINISTRY OF
HEALTH
MANATU HAUORA

“When” Engaged in entire Lifecycle

- **Early in Strategy Development**
 - Eye on future information requirements
 - Alignment of policy / with legislative environment
- **Design, Specifications, Build**
 - From concept to prototype
- **Pre-implementation**
 - Testing, sector alignment, launch
- **Post implementation**
 - Coding, uploads, data quality
 - Warehousing, analysis & reporting
 - Depreciation, maintenance & upgrades



NZHIS 2006/07 Publications



June 2006: NZHIS Publications

- **Cancer: New Registrations & Deaths (2002)**
- **Cancer: Patient Survival (1994 – 2003)**
- **Report on Maternity: MNI (2003)**
- **Fetal & Infant Deaths (2002)**
- **Mortality & Demographic Data (2002 – 2003)**
- **Mental Health: Service use in NZ (2003)**
- **Selected Morbidity Data: Public (2002/03)**
- **Selected Morbidity Data: Private (2002)**




The cover of the report features a blue and white pixelated graphic on the left side. The text on the cover includes 'NEW ZEALAND HEALTH INFORMATION SERVICE', 'Cancer', 'NEW REGISTRATIONS AND DEATHS 2002', and 'Released June 2006'.

NEW ZEALAND HEALTH INFORMATION SERVICE | NEW ZEALAND HEALTH INFORMATION SERVICE | TE PĀRONGO HAUORA | MINISTRY OF HEALTH | MANATU HAUORA

Cancer : New Registrations and Deaths 2002

- Data from NZCR & MORT
- Presents statistics on:
 - Cancer registrations and deaths
 - Demographics
 - Time series for specific cancer sites



The cover of the report features a blue and white pixelated graphic on the left side. The text on the cover includes 'NEW ZEALAND HEALTH INFORMATION SERVICE', 'Cancer Patient Survival', 'COVERING THE PERIOD 1994 to 2003', and 'Released June 2006'.

NEW ZEALAND HEALTH INFORMATION SERVICE | NEW ZEALAND HEALTH INFORMATION SERVICE | TE PĀRONGO HAUORA | MINISTRY OF HEALTH | MANATU HAUORA


Cancer Patient Survival – Covering the Period 1994 to 2003

- Data on how survival of people diagnosed with cancer compares to that of general population,
- Tables and graphs present this data by:
 - age,
 - sex,
 - cancer site,
 - ethnicity,
 - extent of disease.

NEW ZEALAND HEALTH INFORMATION SERVICE
TE PĀRONGO HAUORA

MINISTRY OF HEALTH
MANATU HAUORA

Report on Maternity 2003



**Report on Maternity :
Maternal and Newborn
Information 2003 first
published in 1999**

- Number of births,
- Demographics of mothers,
- Types of births and maternity service providers.

NEW ZEALAND HEALTH INFORMATION SERVICE
TE PĀRONGO HAUORA

MINISTRY OF HEALTH
MANATU HAUORA

Fetal and Infant Deaths 2002




**Fetal and infant deaths
broken down by maternal
age,
Gestation,
Underlying cause,
Fetal and infant death period
Time series on Sudden Infant
Death Syndrome
Fetal and infant death periods**

NEW ZEALAND HEALTH INFORMATION SERVICE
TE PĀRONGO HAUORA

MINISTRY OF HEALTH
MANATU HAUORA

Mortality and Demographic Data 2002 and 2003



- Mortality Collection on underlying causes of deaths,
- Tables of cause of all deaths registered in 2002 & 2003,
- Commentary on major causes of death,
- Time series for specific causes,
- Demographic data.


NEW ZEALAND HEALTH INFORMATION SERVICE
TE PĀRONGO HAUORA

MINISTRY OF HEALTH
MANATU HAUORA

Mental Health: Service Use in New Zealand 2003

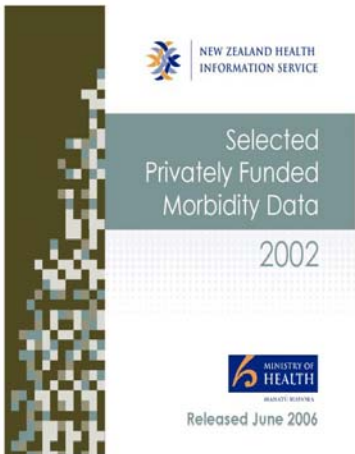


- Developed in close consultation with the Mental Health Directorate.
- Contains data sourced from the MHINC
- Focus on client demographics and service utilisation.



Selected Morbidity Data for Publicly Funded Hospitals 2002/03

- Data from the NMDS
- Patient's demographic data,
- Length of stay and primary diagnoses are presented,
- Commentary and time series on the age distribution of publicly funded hospital discharges.



Selected Privately Funded Morbidity Data 2002

- Data from the NMDS,
- Privately funded hospital events,
- Comparisons with publicly funded hospitals are presented.



Other 2006/07: NZHIS Publications

Publication Title:	Indicitive Date:
Selected Privately Funded Morbidity Data 2003	February 2007
Cancer New Registrations & Deaths (2003/04)	December 2006
Selected Health Professional Workforce in NZ	December 2006
Report on Maternity: MNI (2004)	Jan-Mar 2007
Mental Health – Service Use in New Zealand	April 2007
Cancer New Registrations and Deaths 2005	June 2007
Fetal and Infant Deaths 2003	June 2007
Report on Maturity: Maternal and Newborn Information 2005	June 2007
Mortality and Demographic Data 2004	June 2007
Selected Morbidity Data for Publicly Funded Hospitals 2004-2005	June 2007



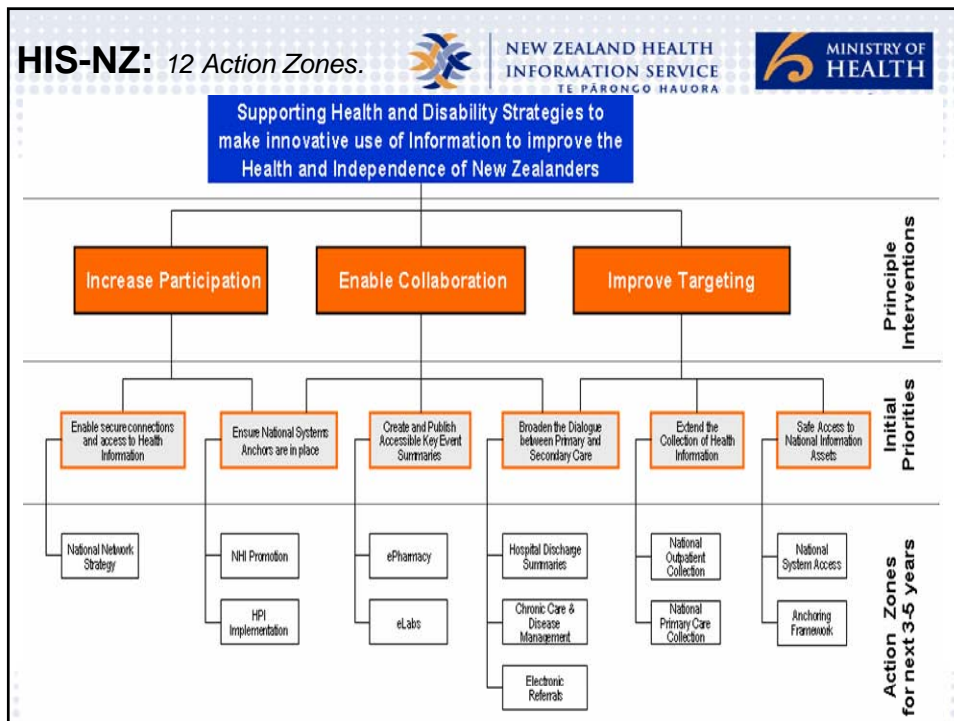
NZHIS Involvement in Major Projects


 NEW ZEALAND HEALTH INFORMATION SERVICE
 TE PĀRONGO HAUORA


 MINISTRY OF HEALTH
 MANATU HAUORA

NZHIS Involvement in Projects


- **NZHIS as Business Owner**
 - Warehouse Transition Programme
 - National Collections Annual Maintenance Programme
- **Improvement to National System Collections**
 - Payments and Agreements
 - Portal & Access
 - Identity Management
 - Analysis & Reporting
 - Next Generation Health Network
 - Data Quality
- **The Health Information Strategy of NZ**
 - Support HISAC – Supporting the Sector
 - 12 Action Zones (Sector Priority Areas to progress)





NZHIS Involvement in Projects

- **NZHIS as Lead Support**
 - National Non-Admitted Patient Collection
 - Health Practitioner Index
 - PrimMHed (Mental Health integrated collection)
 - NIR (upgrades)
 - National Screening System upgrades
 - National Cancer Information Work Programme
 - Organ Donor and Tissue Register
 - Health of Older People collection
 - Maternity & Newborn Info. System (upgrade)



**NZHIS
Key Challenges
on the Horizon &
Opportunities**



“NZHIS” Challenges & Opportunities

- **Improve Information Systems**
- **Flexibility for future system changes**
- **Full supply sets of National Data Collections**
- **Move to full electronic transaction environment**
- **Integrate ‘Provider Identity’ into all Nat. Collections**
- **Improve ease of access to data in NZHIS collections**
- **Increase the use of data stored in NZHIS collections**
- **Reduce leadtime from collection to release (provis.)**
- **Right info, Right place, Right time, Right format**



Presentation End: Open Floor

**Questions / Answers / Discussion
(Subject to Time Availability).**